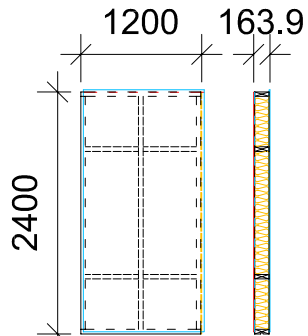


TOMOKU HUS TIMBER FRAME SYSTEM, EURO STANDARD HEIGHT = 2400mm

Inside 0,92 mm board and 0,2 mm clingfilm - Insulation 145 mm mineral wool high quality Lamda 33 - Outside 9,5 mm plywood.



INSIDE
OUTSIDE

24-PLAIN-12

24-12-11x7

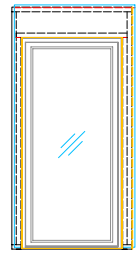
24-12-11x7WB

24-12-11x13

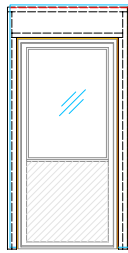
24-12-11x13WB

24-12-11x15

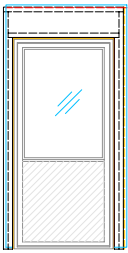
24-12-11x15WB



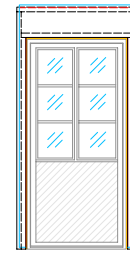
24-12-10x21



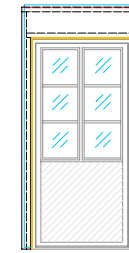
24-12-10x21-13L



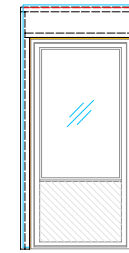
24-12-10x21-13R



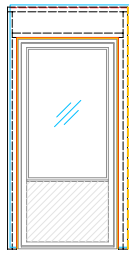
24-12-10x21-13LWB



24-12-10x21-13RWB



24-12-10x21-15L



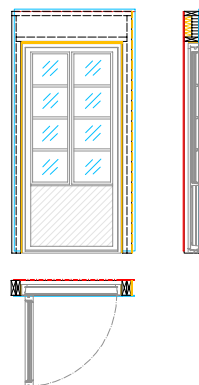
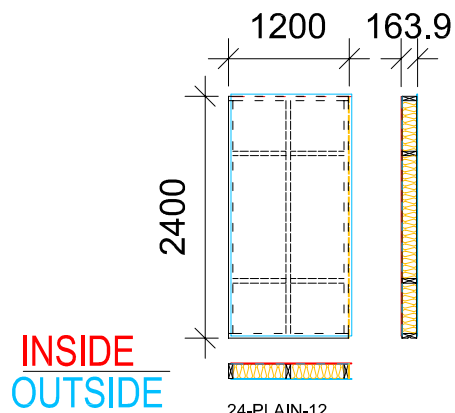
24-12-10x21-15R

- CI = CORNER INSIDE
- CO = CORNER OUTSIDE
- S = STONED GLASS
- WB = WINDOW BARS
- SWB = STONED GLASS AND WINDOW BARS
- L = LEFT
- R = RIGHT
- D = DOOR OPENING

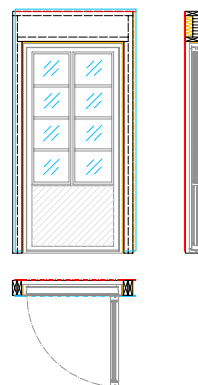
TOMOKU HUS TIMBER FRAME SYSTEM, EURO STANDARD HEIGHT = 2400mm

2(3)

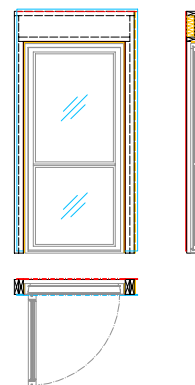
Inside 0,92 mm board and 0,2 mm clingfilm - Insulation 145 mm mineral wool high quality Lamda 33 - Outside 9,5 mm plywood.



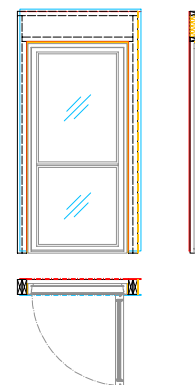
24-12-10x21-15LWB



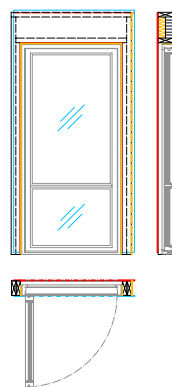
24-12-10x21-15RWB



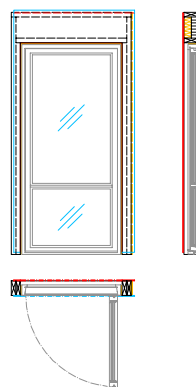
24-12-10x21-13/8L



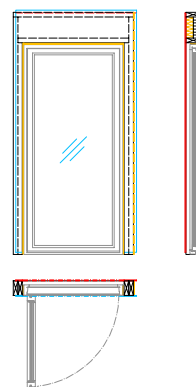
24-12-10x21-13/8R



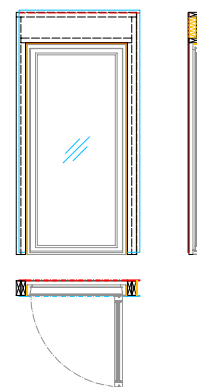
24-12-10x21-15/6L



24-12-10x21-15/6R



24-12-10x21-21L



24-12-10x21-21R

- CI = CORNER INSIDE
- CO = CORNER OUTSIDE
- S = STONED GLASS
- WB = WINDOW BARS
- SWB = STONED GLASS AND WINDOW BARS
- L = LEFT
- R = RIGHT
- D = DOOR OPENING

CREATOR/COPYRIGHT
Copyright TOMOKU HUS AB SWEDEN

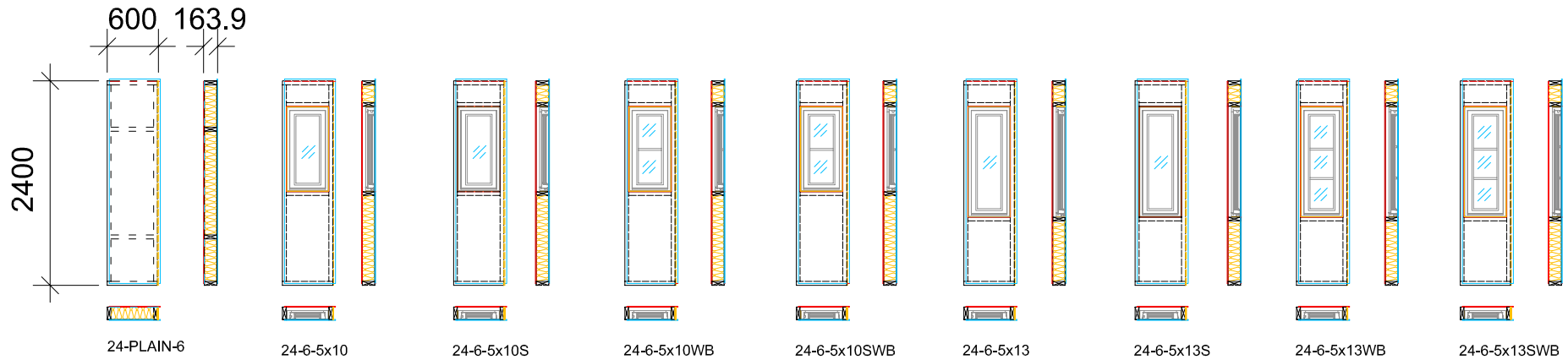


www.actinord.com

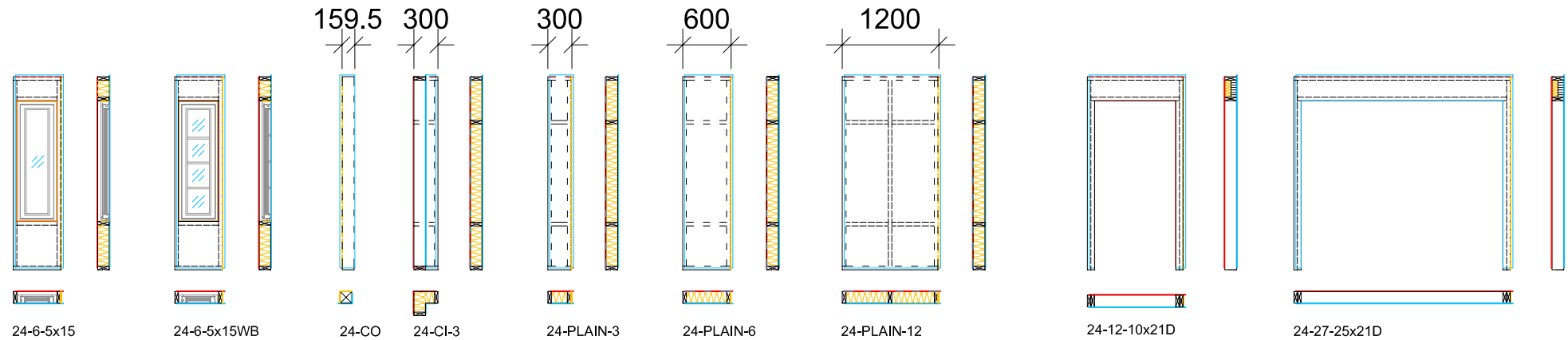
Rev: 2006-04-07

TOMOKU HUS TIMBER FRAME SYSTEM, EURO STANDARD HEIGHT = 2400mm

Inside 0,92 mm board and 0,2 mm clingfilm - Insulation 145 mm mineral wool high quality Lamda 33 - Outside 9,5 mm plywood.



INSIDE
OUTSIDE



- CI = CORNER INSIDE
- CO = CORNER OUTSIDE
- S = STONED GLASS
- WB = WINDOW BARS
- SWB = STONED GLASS AND WINDOW BARS
- L = LEFT
- R = RIGHT
- D = DOOR OPENING